

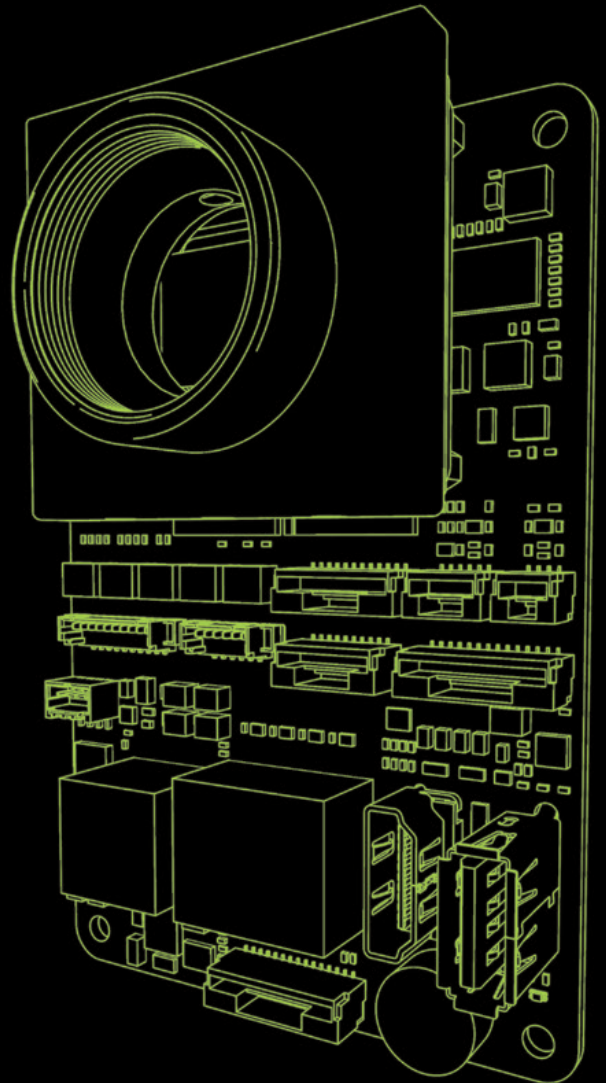
New!

D3 Industrial Camera

Intelligent Cameras built for industry requirements

Easy Integration in the Field

The D3 industrial camera IC3 OEM has a compact design with a single main board and a separate sensor board. The sensor board can be mounted to the main board or connected via cable. Industry-standard interfaces and the powerful D3 intelligent camera platform offer performance and flexibility for your project. Combined with Common Vision Blox, EyeVision, GStreamer, HALCON, OpenCV, and many other toolkits and libraries, the D3 industrial camera covers the full range of machine vision applications. This makes the IC3 OEM perfectly suitable for autonomous sensor applications in an industrial environment.



24 V



GigE



PoE



Digital
Video Out



HI-SPEED



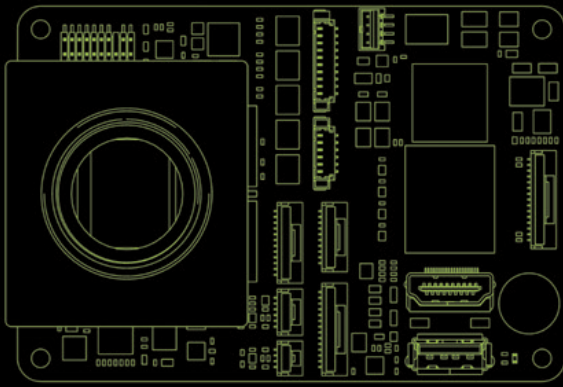
RS-232



MEMORY
CARD



GPIO



VRmic3 OEM

Product Highlights

- Power supply via PoE or 12...48 V DC wide-range power input
- Interfaces optimized for industry OEM applications
- 1 GHz ARM® Cortex™-A8 Core, 700 MHz C674x™ DSP, both with Floating Point Unit (FPU)
- 2 GB DDR3-800 RAM, 32 GB flash memory
- Widest support for embedded image processing software currently available on the market
- Single-sensor camera (sensor mounted to main board) or remote-sensor camera (external sensor connected by cable)

Technical Data

Interfaces		Physical Characteristics	
Communication	Gigabit Ethernet (PoE), USB 2.0 host/device, LVTTTL GPIOs, potential-free GPOs and GPIs, RS232, CAN bus, SPI bus, I2C	Dimensions W x H [mm]	65 x 95
Video	HDMI, S-Video	Mounting Holes [mm]	57 x 87
Further Interfaces and Features	SD card reader, trigger, strobe, Watchdog, 12...48 V DC wide-range power input, RTC with onboard gold-cap	Camera Designs	OEM: without lens mount COB S-Mount: M12 lens mount, 12.0 mm F2.0 lens, filter glass COB C-Mount: C-Mount and filter glass, lens not included

Available Image Sensors

Sensor ID	12	14	18
Sensor Type	Aptina MT9V024	Sony ICX445	Aptina MT9M024
Technology	CMOS global shutter	CCD interline Transfer	CMOS rolling shutter
Color / Monochrome	● / ●	● / ●	● / ●
Sensor Size [inch]	1/3 wide	1/3	1/3
Resolution [px]	754 x 480	1296 x 966	1280 x 960
Bit Depth [bit]	8/10	8/10	8/10
Min. Exposure Time [μs]	30	15	22
Pixel Clock [MHz]	13...27	36	74.25
Max. Frame Rate [Hz] *	70	22	45

Sensor ID	20	22	42
Sensor Type	Aptina AR0134	CMOSIS CMV2000	CMOSIS CMV4000
Technology	CMOS global shutter	CMOS global shutter	CMOS global shutter
Color / Monochrome	● / ●	● / ●	● / ●
Sensor Size [inch]	1/3	2/3 ultra wide	1
Resolution [px]	1280 x 960	2048 x 1088	2048 x 2048
Bit Depth [bit]	8/10	8/10	8/10
Min. Exposure Time [μs]	56	44.3	44.3
Pixel Clock [MHz]	74.25	4 x 25	4 x 25
Max. Frame Rate [Hz] *	45	44 **	24 **

* This is the maximum value at full ROI with minimum exposure time. The actual frame rate depends on the pixel clock, sensor settings, and image format.

** With RLE image format



Imaging is our passion.
www.stemmer-imaging.com

STEMMER IMAGING Head Office
Gutenbergstraße 9 - 13, D-82178 Puchheim
Phone: +49 89 80902-0, info@stemmer-imaging.de

STEMMER[®]
IMAGING